



## AmigoPod Integration Guides – Trendnet TEW-453APB

<b>Dated Tested:</b>	10 April 2007
<b>AmigoPod Version:</b>	Engine→0.99.35, Radius Services→ 0.6.10
<b>Plugins Required:</b>	Standard build only
<b>Trendnet Version:</b>	2.0 Release 39
<b>Integration:</b>	HTTP Captive Portal

### Overview:

The TEW-453APB is a 108Mbps high speed 802.11g Hot Spot Wireless Access Point that offers advanced wireless security, network management, and Power-over-Ethernet capabilities. Wireless security features include TKIP and AES algorithms for WPA, and also Radius based MAC authentication.



### Integration:

The key feature of the TEW-453APB is its Hot Spot or Universal Access Manager (UAM) functionality that allows AmigoPod to provide the required RADIUS platform for managed temporary Guest accounts.

UAM is intended for use in Internet cafes, Hot Spots, and other sites where the Access Point is used to provide Internet Access. If enabled, then HTTP (TCP, port 80) connections are checked. (UAM only works on HTTP connections; all other traffic is ignored.) If the user has not been authenticated, Internet access is blocked, and the user is re-directed to another web page – in this case the AmigoPod Web logins facility.

Although the TEW-453APB supports both internal and external authentication, this integration guide will focus on the later as the internal authentication dictates the use of the internal Login Page resident on the AP itself. The Login page is very basic and doesn't allow for significant customization as is possible with the AmigoPod Web Logins feature.



## AmigoPod Integration Guides – Trendnet TEW-453APB

### Step 1:

By default the TEW-453APB has an IP address of 192.168.0.228. Please follow the Trendnet User Guide to gain configuration control of the AP and set the basic IP Addressing to match your networking environment. Given the RADIUS interaction we strongly recommend the use of a Fixed IP address setting that is available through the web interface.

TEW - 453APB Setup

**TRENDnet**  
TRENDware, USA

## System

- Access Control
- Security Profiles
- System
- Status
- ▼ Wireless
- ▼ Management
- Log Out
- Apply/Restart

**Identification**

Access Point Name: SCF5CCFA

Description:

Country or Domain: Australia

MAC Address: 00:C0:02:F5:CC:FA

**IP Address**

DHCP Client

Fixed IP Address

IP address: 192 . 168 . 0 . 228

Subnet Mask: 255 . 255 . 255 . 0

Gateway: 0 . 0 . 0 . 0

DNS:  .  .  .

**WINS**

Enable WINS

WINS Server Name/IP Address:

Save Cancel Help


**Note:** Fixed IP Address \_\_\_\_\_ This will be required for a later step.






## AmigoPod Integration Guides – Trendnet TEW-453APB

### Step 2:


Now that a fixed IP Address has been defined the Trendnet AP, this needs to be defined within the AmigoPod configuration. Typically, the AmigoPod software is installed on an appliance or server with a fixed IP Address and potentially a locally defined host name. Referring back to your initial installation of the AmigoPod solution, open a web browser and enter either the IP Address or host name defined during the installation. You should be presented with a login screen similar to the one below:

 **login**


[Home](#)

 [Dansk](#)  [English](#)  [Español](#)

### Login Required

 The amigopod demo site requires a username and password.

If you don't have a login, [contact amigopod](#) to obtain one.

 amigopod

**User Login**

\* Username:

\* Password:

\* required field

copyright © 2007 amigopod pty ltd.

Enter your username and password. The default AmigoPod username is *admin* and the password is *amigopod*.



## AmigoPod Integration Guides – Trendnet TEW-453APB

### Step 3:

Once successfully logged into the AmigoPod administration interface, you will be presented with the AmigoPod Home Page where the RADIUS Services section can be accessed. Click on RADIUS Services on the screen shown below:

**amigopod network management**

- **Home**
  - ➔ **Start Here**
  - ➔ Language
  - ➔ Manage Plugins
  - ➔ Add New Plugin
  - ➔ Update Plugins
  - ➔ User Logins
  - ➔ Time Zone
  - ➔ Application Log
- **GuestManager**
  - ➔ Start Here
  - ➔ Create Account
  - ➔ Create Multiple
  - ➔ List Accounts
  - ➔ Edit Accounts
  - ➔ Import Accounts
  - ➔ Export Accounts
  - ➔ Print Templates
  - ➔ Customization
- **SMS Services**
  - ➔ Start Here
  - ➔ Send SMS
  - ➔ Configure SMS
- **RADIUS Services**
  - ➔ Start Here
  - ➔ Server Control
  - ➔ Database List
  - ➔ Dictionary
  - ➔ NAS List
  - ➔ User Roles
  - ➔ Usage Report
  - ➔ Web Logins
- **Reporting Manager**
  - ➔ Start Here
- **Logout**

**Guest Manager**  
Manage guest user accounts.

- Create new guest account
- List guest accounts

**RADIUS Services**  
Manage the local RADIUS server and the user accounts stored within it.

**Blueware Engine**  
Manage this web application.

- Manage plugins
- Add a new plugin
- List all login accounts

➔ Logout

copyright © 2007 amigopod pty ltd.



# AmigoPod Integration Guides – Trendnet TEW-453APB

## Step 4:

From the Radius Services menu, select Network Access Servers:

**radius services**

- Home
  - Start Here
  - Language
  - Manage Plugins
  - Add New Plugin
  - Update Plugins
  - User Logins
  - Time Zone
  - Application Log
- GuestManager
  - Start Here
  - Create Account
  - Create Multiple
  - List Accounts
  - Edit Accounts
  - Import Accounts
  - Export Accounts
  - Print Templates
- RADIUS Services**
  - Start Here**
  - Server Control
  - Database List
  - Dictionary
  - NAS List
  - User Roles
  - Web Logins
  - Usage Report
- Logout

The local RADIUS server needs to be restarted to complete the changes made.

Restart RADIUS Server

### RADIUS Server Management

Use the commands below to manage your network's RADIUS server.

- Server Control**  
Start, stop and restart the local RADIUS server.
- Server Configuration**  
Set the RADIUS server's port number and other server configuration options.
- Databases**  
Create RADIUS database connections and choose the active database for this RADIUS server.
- Dictionary**  
Define RADIUS Vendor IDs, vendor-specific attributes and values for use by the RADIUS server.
- Network Access Servers**  
Manage the Network Access Servers that will use this RADIUS server.
- User Roles**  
Create and manage the user account types that this server will use for RADIUS Authorization.
- Usage Report**  
Generate a usage report summarizing the RADIUS Accounting records.
- Web Logins**  
Create and manage custom web login pages for your Network Access Servers.

[Back to main](#)



## AmigoPod Integration Guides – Trendnet TEW-453APB

### Step 5:

Being a new install, there are currently no NAS entries defined. Click on the Create icon at the top of the page shown below:



## radius network access servers

Each network access server that will use this RADIUS server for authentication or accounting purposes should be defined here.

[Quick Help](#) [Create](#) [Edit](#)

### Create Network Access Server

\* Name:   
A descriptive name for the network access server (NAS). This name is used to identify each NAS.

\* IP Address:   
The IP address or hostname of the network access server.

\* NAS Type:   
Select the type of NAS.

\* Shared Secret:   
The shared secret used by this network access server.

Description:   
Enter notes or descriptive text here.

\* required field

Name	Hostname	Type	Comments
0 items			

10 rows per page

[RADIUS Services](#)

[Back to main](#)



## AmigoPod Integration Guides – Trendnet TEW-453APB

### Step 6:

Fill out the details of the Create NAS form based on the IP Addressing details defined for the Trendnet AP in Step 1. Leave the default Other NAS entry for the NAS Type and define a shared secret that will be configured both here in the AmigoPod and also in the Trendnet in future steps. Once complete click on the Create NAS Device button.

Each network access server that will use this RADIUS server for authentication or accounting purposes should be defined here.

**Create Network Access Server**

\* Name:  A descriptive name for the network access server (NAS). This name is used to identify each NAS.

\* IP Address:  The IP address or hostname of the network access server.

\* NAS Type:  Select the type of NAS.

\* Shared Secret:  The shared secret used by this network access server.

Description:  Enter notes or descriptive text here.

\* required field

Name	Hostname	Type	Comments
0 items			

[RADIUS Services](#) [Back to main](#)

**Note:** NAS Shared Secret \_\_\_\_\_ This will be required at a later step.



## AmigoPod Integration Guides – Trendnet TEW-453APB

### Step 7:

Once the NAS has been created, the RADIUS Server needs to be restarted for the changes to take affect. This can be seen from the warning message shown at the top of the screen and the button below should be clicked to initiate a restart of the RADIUS services.

Once the RADIUS services have restarted the next step is to create the customized Web Login pages that the wireless users will be presented with when they attempt to login to the network. Under the RADIUS Services menu of the left, select the Web Logins menu option to continue onto the next step.






## AmigoPod Integration Guides – Trendnet TEW-453APB

### Step 8:

Being a new install, there are currently no web logins defined. Click on the Create a new web login page option listed below the table:




# radius web logins


- Home
  - Start Here
  - Language
  - Manage Plugins
  - Add New Plugin
  - Update Plugins
  - User Logins
  - Time Zone
  - Application Log
- GuestManager
  - Start Here
  - Create Account
  - Create Multiple
  - List Accounts
  - Edit Accounts
  - Import Accounts
  - Export Accounts
  - Print Templates
- RADIUS Services**
  - Start Here
  - Server Control
  - Database List
  - Dictionary
  - NAS List
  - User Roles
  - Web Logins**
  - Usage Report
- Logout


Many NAS devices support Web-based authentication for visitors.


By defining a web login page on the amigopod you are able to provide a customised graphical login page for visitors accessing the network through these NAS devices.

Use this list view to define new web login pages, and to make changes to existing web login pages.

Name	Page Title	Page Skin
i There are no web login pages to display.		
0 web logins  Reload		10 rows per page <input type="button" value="v"/>

 [Create a new web login page](#)

 [RADIUS Services](#)

 [Back to main](#)

copyright © 2007 amigopod Pty Ltd.



## AmigoPod Integration Guides – Trendnet TEW-453APB

### Step 9:


Complete the following Web Login form based on your local deployment to ensure the correct descriptions and HTML customization is configured in both the Header and Footer section to match the brand and messaging of the wireless service being offered. Particular attention needs to be paid to the following fields to ensure a clean integration with the Trendnet AP:

**Submit URL** → The IP Address here must match the one defined in step 1 followed by the /uamlogon.htm suffix.

**Submit Method** → This must be set to POST

**Username Field** → This needs to be set as hs\_username

**Password Field** → This needs to be set as hs\_password



## radius web login

- Home
  - Start Here
  - Language
  - Manage Plugins
  - Add New Plugin
  - Update Plugins
  - User Logins
  - Time Zone
  - Application Log
- GuestManager
  - Start Here
  - Create Account
  - Create Multiple
  - List Accounts
  - Edit Accounts
  - Import Accounts
  - Export Accounts
  - Print Templates
- RADIUS Services**
  - Start Here
  - Server Control
  - Database List
  - Dictionary
  - NAS List
  - User Roles
  - Web Logins**
  - Usage Report
- Logout

Use this form to create a new RADIUS Web Login.

### RADIUS Web Login Editor

\* Page Name:   
Enter a name for this web login page.

Description:   
Comments or descriptive text about the web login.

**Login Form**  
Options for specifying the behaviour and content of the login form.

\* Submit URL:   
The URL of the NAS device's login form.

\* Submit Method:    
Choose the method to use when submitting the login form to the NAS.

\* Username Field:   
The name of the username field for the login form. This will be passed to the NAS device when the form is submitted.

\* Password Field:   
The name of the password field for the login form. This will be passed to the NAS device when the form is submitted.

Extra Fields:   
Specify any additional field names and values to send to the NAS device as name=value pairs, one per line.

**Login Page**  
Options for controlling the look and feel of the login page.

\* Skin:    
Choose the skin to use when this web login page is displayed.

Title:   
The title to display on the web login page.

Header HTML:   
The HTML to display on the web login page.

copyright © 2007 [amigopod Pty Ltd.](http://www.amigopod.com)



## AmigoPod Integration Guides – Trendnet TEW-453APB

### Step 9:

Once the Web Login page has been created and saved, it should be tested to ensure it has the correct look and feel for your wireless clients. This can be done by clicking on the newly created Web Login page once and selected the Test option that is displayed below the entry:

**radius web logins**

Many NAS devices support Web-based authentication for visitors.

By defining a web login page on the amigopod you are able to provide a customised graphical login page for visitors accessing the network through these NAS devices.

Use this list view to define new web login pages, and to make changes to existing web login pages.

**Created new RADIUS Web Login: Guest Login**

Name	Page Title	Page Skin
<b>Guest Login</b> Web Login Page for Guest Wireless Access	amigopod Login	amigopod Skin

Copy Edit Delete Test

1 web logins Reload 10 rows per page

Create a new web login page

RADIUS Services

Back to main

copyright © 2007 amigopod Pty Ltd.



## AmigoPod Integration Guides – Trendnet TEW-453APB

### Step 10:

Once the Test button has been clicked, the new Web Login page will be displayed so it can be verified for layout and content purposes. The URL displayed in the web browser should be recorded for a later step in the integration.



**Note:** Web Login URL \_\_\_\_\_ This will be required at a later step.

### Step 11 (Optional):

The Trendnet AP allows for the definition of a separate URL that failed login attempts can be sent to. Typically this page would include tips on how to login or who to contact in the events of login issues. If the deployment requires this level of information to be provided to the wireless clients, a second web login page can be created using the procedure above with more specific HTML customization around what to do in the event of a login failure. Again the URL displayed in the final testing step will need to be recorded for a future step.

**Note:** Web Login URL \_\_\_\_\_ This will be required at a later step.




## AmigoPod Integration Guides – Trendnet TEW-453APB

### Step 12:

Returning to the web administration interface of the TrendNet AP, the next step is to setup the wireless network for the guest users. From the Security Profiles screen shown below, select the default Profile named wireless and click on the Configure button.

TEW - 453APB Setup



# Security Profiles

- Access Control
- Security Profiles**
- System
- Status
- Wireless
  - Basic
  - Advanced
- Management
  - Log Out
  - Apply/Restart

Profiles	Profile Name [SSID]	Security [Band]
<input checked="" type="checkbox"/>	wireless [wireless]	None [2.4 GHz]
<input type="checkbox"/>	Profile02 [wireless]	None [2.4 GHz]
<input type="checkbox"/>	Profile03 [wireless]	None [2.4 GHz]
<input type="checkbox"/>	Profile04 [wireless]	None [2.4 GHz]
<input type="checkbox"/>	Profile05 [wireless]	None [2.4 GHz]
<input type="checkbox"/>	Profile06 [wireless]	None [2.4 GHz]

\* Indicates profile is currently enabled.

**Primary Profile**

802.11b/g AP Mode:

802.11b/g Bridge Mode:

These settings have no effect unless the appropriate mode is enabled.  
If enabled, the selected Profile/SSID is used for the beacon.

**Isolation**

Profile (SSID) Isolation:

- No isolation
- Isolate all Profiles (SSIDs) from each other
- Use VLAN (802.1Q) standard




## AmigoPod Integration Guides – Trendnet TEW-453APB

### Step 13:

At this point you have the opportunity to rename the Profile to a name that is significant to your deployment and also define the SSID that is going to be used by your wireless client. Given we are creating a Hot Spot style service you can choose to leave the Wireless Security System as None to make the association process as easy as possible for the wireless users. (Alternatively, you may wish to set a static WPA PreShared Key for a level of encryption over the air – AmigoPod can then be customized to include this PreShared Key on the print receipts detailing the user's login credentials). For the example below, the simple approach of No Wireless Security has been chosen. Once complete, click on the Configure button listed to the right of the UAM section.

TEW - 453APB Setup Click the "Apply/Restart" button on the menu to have your changes take effect.



## Security Profile

Access Control

Security Profiles

System

Status

▲ Wireless

▶ Basic

▶ Advanced

▼ Management

Log Out

Apply/Restart

**Profile**

Profile Name:

SSID:

Wireless Band:

**Security System**

Wireless Security System:

**Security Settings**

**Radius MAC Authentication**

Current Status: Disabled

**UAM**

Current Status: Disabled



## AmigoPod Integration Guides – Trendnet TEW-453APB

### Step 14:

Enable the UAM feature by selecting the first Check Box at the top of the page. This example is based on using the External Authentication option and therefore the Login URL and Login Failure URL fields need to be completed with the URLs collected during Step 10 whilst configuring the AmigoPod. Additionally, the RADIUS details for the AmigoPod install must also be entered in the subsequent fields as shown in the example below.

The RADIUS Server Address will be the AmigoPod IP Address used in Step 2 or a Fully Qualified Domain Name as shown below if your DNS Administrator has added an entry from the AmigoPod.

By default AmigoPod use port 1812 for RADIUS authentication requests.

The Shared Key is the NAS Shared Secret that was configured and recorded during Step 6.

A screenshot of a web browser window titled 'http://10.0.20.228 - UAM - Mozilla Firefox'. The main heading is 'UAM (Universal Access Method)'. The configuration options are as follows:

- UAM (Universal Access Method)
- Internal Web-based Authentication
- External Web-based Authentication
- Login URL:
- Login Failure URL:
- Radius Server Address:
- Radius Port:
- Client Login Name:
- Shared Key:

At the bottom, there are four buttons: 'Save', 'Cancel', 'Help', and 'Close'. The status bar at the bottom left shows 'Done'.

Press Save and Close buttons to exit the UAM Configuration screen.



## AmigoPod Integration Guides – Trendnet TEW-453APB

### Step 15:

Returning to the Security Profiles screen, click on the Apply/Restart button for the changes to take effect. The reboot of the Trendnet AP may take a couple of minutes but at this point the configuration of the AP is complete and the next step is to test the solution.

TEW - 453APB Setup **Click the "Apply/Restart" button on the menu to have your changes take effect.**

**TRENDnet**  
TRENDAware, USA

### Security Profile

**Profile**  
Profile Name:   
SSID:   
Wireless Band:

**Security System**  
Wireless Security System:

**Security Settings**  
**Radius MAC Authentication**  
Current Status: Disabled

**UAM**  
Current Status: Enabled

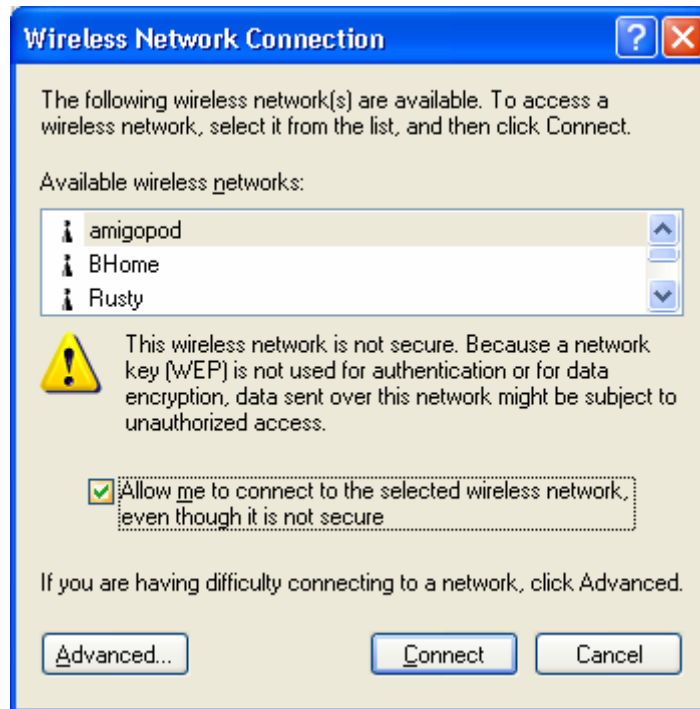




## AmigoPod Integration Guides – Trendnet TEW-453APB

### Step 16:

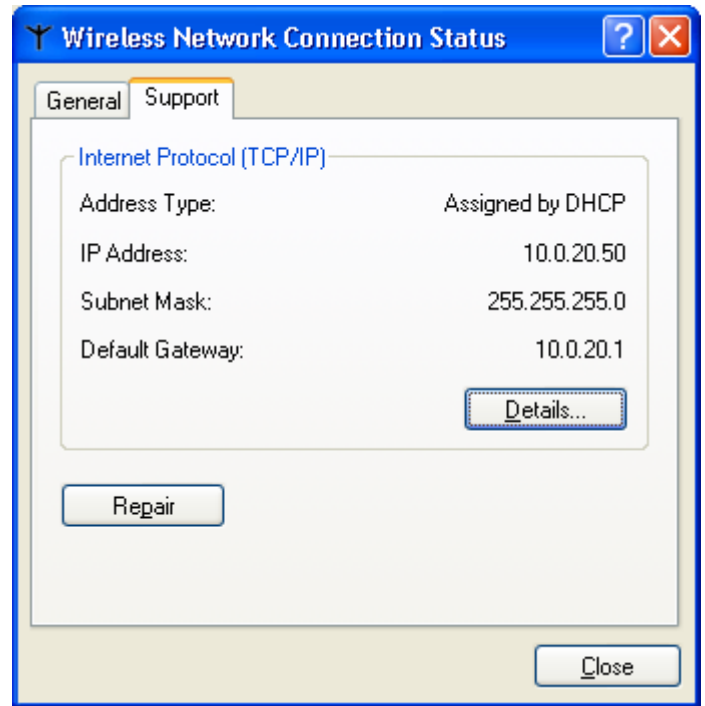
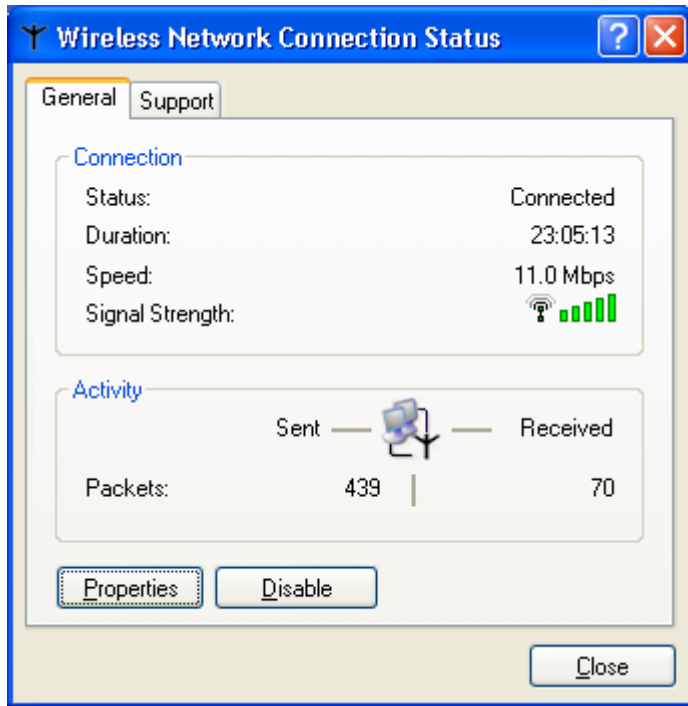
Using the Wireless Driver software that comes with the wireless adaptor in your laptop or the default Windows Zero Configuration Utility as shown below connect to the AmigoPod SSID (or local alternative) that was configured in Step 13.





## AmigoPod Integration Guides – Trendnet TEW-453APB

A successful connection to the AmigoPod Wireless network can be confirmed by double clicking on the network icon in the System Tray of the Windows Task bar to reveal the following status window. The connection duration, speed and signal strength can all be verified from this screen.



Clicking on the Support tab of the same window will confirm that an IP Address has been successfully configured via DHCP.

If either the Wireless connection has not been established or a DHCP address been configured then there is an issue with either the setup of the wireless card or potentially support for DHCP on the local LAN. Please refer to the manufacturers instructions for configuration of the wireless card and/or consult the local network administrator for advice on DHCP support.



## AmigoPod Integration Guides – Trendnet TEW-453APB

### Step 17:

Now that the test laptop is successfully connected to the Wireless LAN, the only step remaining is to login as a guest user. To do this a test user must exist in the AmigoPod database. Returning back to the AmigoPod Web interface, select Guest Manager from the left hand menu:

**Home**

- Start Here
- Language
- Manage Plugins
- Add New Plugin
- Update Plugins
- User Logins
- Time Zone
- Application Log

**GuestManager**

- Start Here**
- Create Account
- Create Multiple
- List Accounts
- Edit Accounts
- Import Accounts
- Export Accounts
- Print Templates

**RADIUS Services**

- Start Here
- Server Control
- Database List
- Dictionary
- NAS List
- User Roles
- Web Logins
- Usage Report

**Logout**

### guestmanager

## Guest Account Management

Use the commands below to manage your network's guest user accounts.

- Create New Guest Account**  
Set up a new account for guest access to your network.
- Create Multiple Guest Accounts**  
Create multiple guest accounts, each with a randomly-assigned username and password.
- List Guest Accounts**  
View a list of all current guest accounts. You can modify and remove individual user accounts here.
- Edit Multiple Guest Accounts**  
View a list of all current guest accounts. You can modify and remove one or more user accounts here.
- Export Guest Accounts**  
Export a list of all current guest accounts to a file. You can select the format you want to export to here.
- Import Guest Accounts**  
Import a list of guests from a text file and create a guest account for each entry in the list.

### About Guest Network Access

Once you have created a guest account, your guest will be able to start using your network immediately.

Your guest should connect to the wireless network named **NoWiresAllowed**. After opening their Web browser, they should log in with their user name (email address) and password.

### More Options


- [Manage print templates](#)
- [List guest accounts on a single page](#)
- [Manage multiple guest accounts on a single page](#)



## AmigoPod Integration Guides – Trendnet TEW-453APB

### Step 18:

Selecting the Create New Guest Account option will present the following form that can be completed with the details of your test user. Fill out details of the test user including how long the user should have access to the internet from the Account Expiry drop down box and also the Role that the account should be assigned to (For more information on creating and defining roles, please see the AmigoPod User Guide).





## create guest account


- Home
  - Start Here
  - Language
  - Manage Plugins
  - Add New Plugin
  - Update Plugins
  - User Logins
  - Time Zone
  - Application Log
- GuestManager**
  - Start Here
  - Create Account**
  - Create Multiple
  - List Accounts
  - Edit Accounts
  - Import Accounts
  - Export Accounts
  - Print Templates
- RADIUS Services**
  - Start Here
  - Server Control
  - Database List
  - Dictionary
  - NAS List
  - User Roles
  - Web Logins
  - Usage Report
- Logout

New guest account being created by **root**.

New Guest Account	
* Sponsor's Name:	<input type="text" value="admin"/> <small>Name of the person sponsoring this guest account.</small>
* Guest's Name:	<input type="text" value="Test User"/> <small>Name of the guest.</small>
* Company Name:	<input type="text" value="amigopod"/> <small>Company name of the guest.</small>
* Email Address:	<input type="text" value="test@amigopod.com"/> <small>The guest's email address. This will become their username to log into the network.</small>
* Account Expiry:	1 hour <input type="button" value="v"/> <small>Amount of time before this guest account will expire.</small>
* Account Role:	Guest <input type="button" value="v"/> <small>Role to assign to this guest account.</small>
Guest Password:	96210437
* Terms of Use:	<input checked="" type="checkbox"/> I am the sponsor of this guest account and accept the <a href="#">terms of use</a>

\* required field

 [GuestManager services](#)  [List guest accounts](#)

 [Back to main](#)

copyright © 2007 amigopod pty ltd.



## AmigoPod Integration Guides – Trendnet TEW-453APB

### Step 19:

After clicking on the Create Account button, the new user account will be written to the AmigoPod database and a confirmation screen will be presented with the login credentials. Be sure to either record the email address and password presented or select the Print Receipt option to print out a copy of the login credentials (For more information on creating and defining Print Receipt Templates please see the AmigoPod User Guide).

The screenshot shows the AmigoPod web interface. At the top, there is a header with the AmigoPod logo and the text "finished creating guest account". Below the header, a message states "The guest account was successfully created." To the right of this message is a table titled "Account Details" with the following information:

Account Details	
Guest username:	test@amigopod.com
Guest password:	96210437
Account expiration:	Wednesday, 11 April 2007, 02:40 PM
Account role:	Guest
Sponsor name:	admin

Below the table, there are several options: "Open print window using template..." (with a dropdown arrow), "Create another guest account", "GuestManager services", "List guest accounts", and "Back to main". On the left side, there is a navigation menu with categories: Home, GuestManager, RADIUS Services, and Logout. The "GuestManager" category is expanded, showing "Create Account" as the selected option.

copyright © 2007 amigopod pty ltd.

**Note:** Guest Username \_\_\_\_\_ This will be required at a later step.

**Note:** Guest Password \_\_\_\_\_ This will be required at a later step.



## AmigoPod Integration Guides – Trendnet TEW-453APB

### Step 20:

Returning back to the test laptop now, open up a web browser such as Internet Explorer or Firefox and assuming a Home Page is configured the browser will automatically attempt to connect to the Internet. The Trendnet AP will then capture this attempt and redirect the web browser to the AmigoPod Web Login page created in Step 10 as shown below:

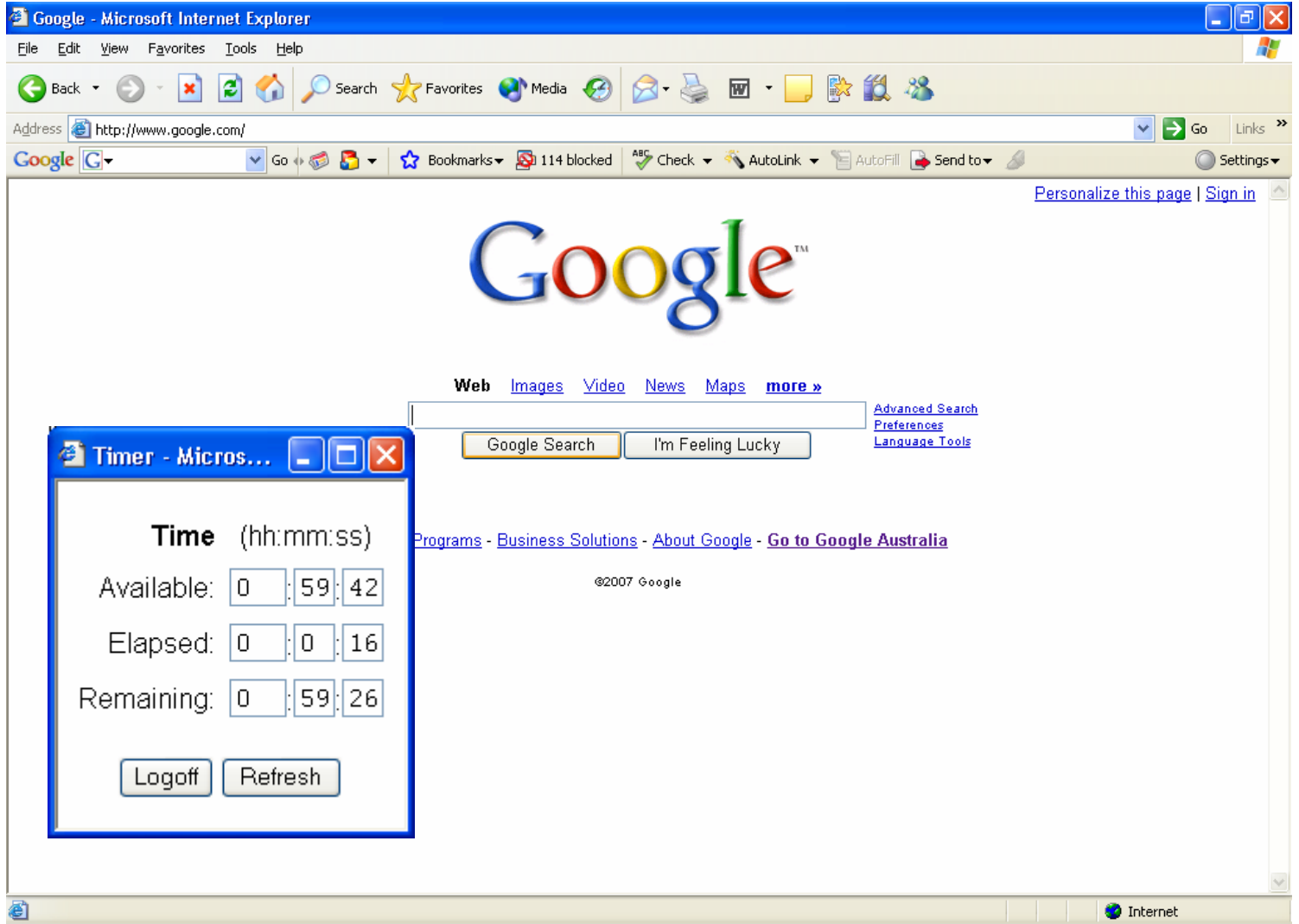
A screenshot of the AmigoPod web login page. At the top left is the AmigoPod logo. To its right, the text "amigopod login" is displayed in a large, bold, orange and grey font. Below this is a horizontal line. The main content area contains the text "Please login to the network using your amigopod username and password." followed by a login form. The form has a dark grey header with the text "amigopod Login". It contains two input fields: "Username:" with the value "test@amigopod.com" and "Password:" with a masked password of ten dots. Both fields are marked with an asterisk. Below the fields is a "Log In" button. Underneath the form, there is a note: "\* required field". Below that is the text "Contact a staff member if you are experiencing difficulty logging in." followed by another horizontal line. At the bottom center, the copyright notice "copyright © 2007 amigopod Pty Ltd." is displayed.

Enter the Guest Username and Password recorded at the previous step and click on the Login button to be connected to the Internet. The web browser should now be redirected to the original destination defined as the home page.



## AmigoPod Integration Guides – Trendnet TEW-453APB

For example, if your Home Page was configured to go to google.com, after successful authentication the browser will be redirected straight to the Google home page and also a separate pop-up window will be displayed detailing the amount of time still left on the Test User's account as shown below:



If you have experienced any issues setting up this integration with AmigoPod please step back through the document and verify the configuration. If the problem has not been resolved, please contact AmigoPod on [support@amigopod.com](mailto:support@amigopod.com) with the details of the issue. We value your feedback.